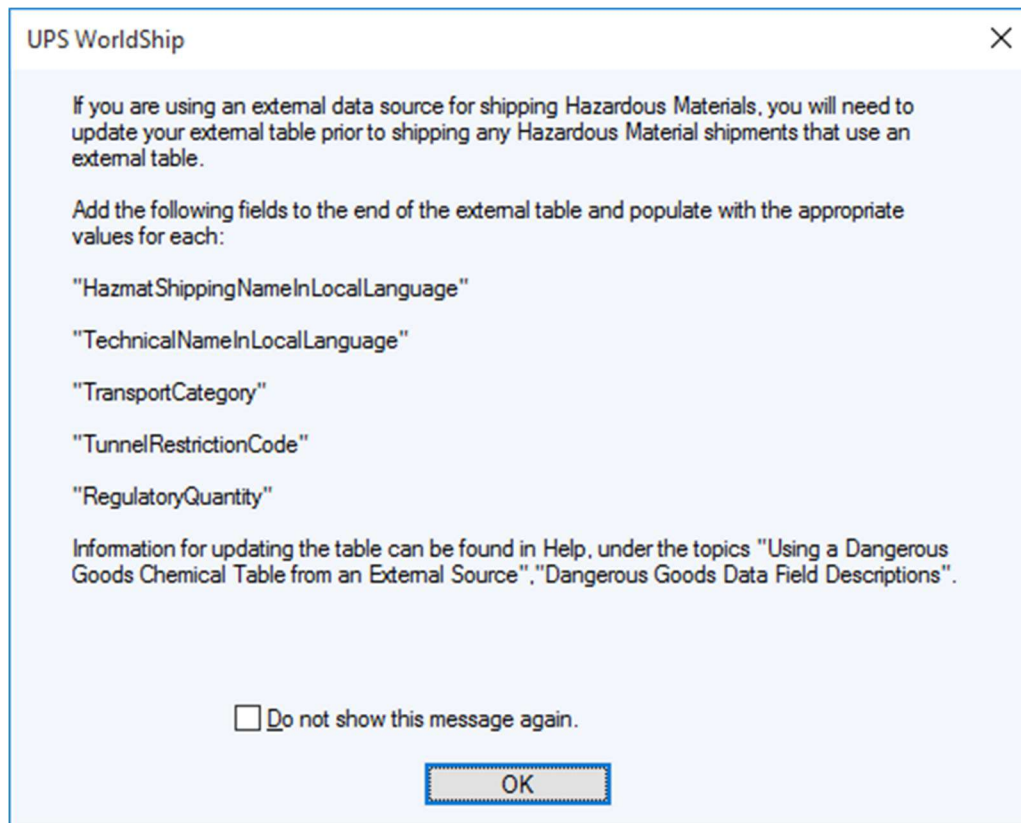


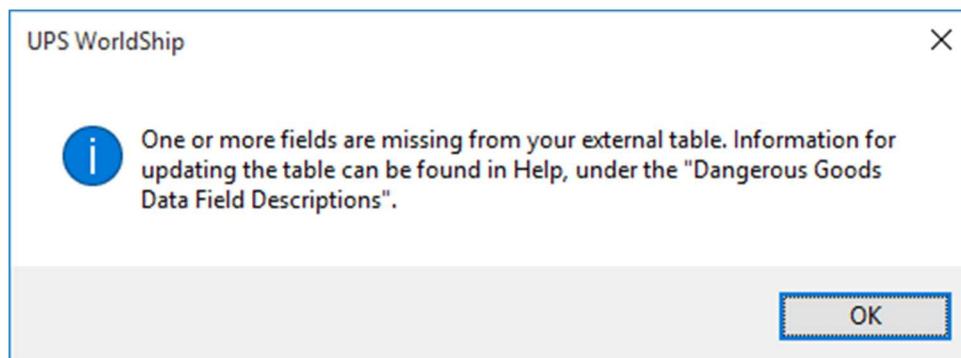
## UPS WorldShip 2017 and DGIS

UPS WorldShip 2017 and newer versions involve changes within the database that the software receives from DGIS. As a result, it will be necessary to change a setting in DGIS in order to use the new format once you have updated WorldShip to 2017.

After updating WorldShip to the 2017 or newer version, you will receive the following dialog informing that a change has been made:

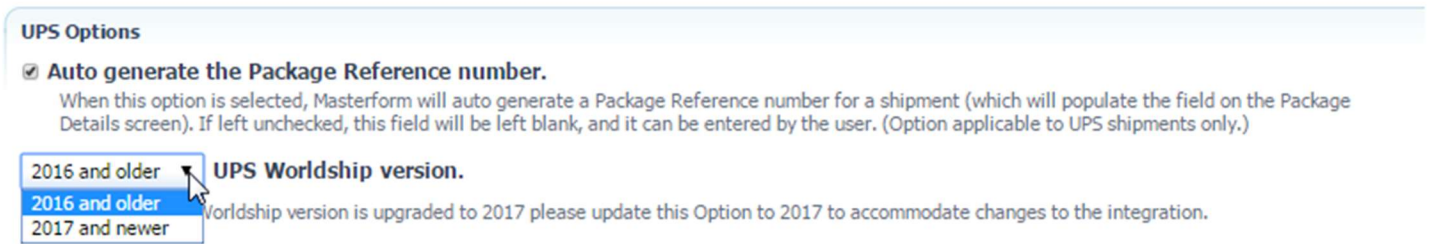


You may also see the following error if you try to open a shipment in the wrong format in WorldShip:



## UPS WorldShip 2017 and DGIS

In order to make the change, go to the Administration tab in DGIS and select User Options. Scroll down to the UPS Options section and select the correct version of WorldShip you are using:



**UPS Options**

☒ **Auto generate the Package Reference number.**  
When this option is selected, Masterform will auto generate a Package Reference number for a shipment (which will populate the field on the Package Details screen). If left unchecked, this field will be left blank, and it can be entered by the user. (Option applicable to UPS shipments only.)

**UPS Worldship version.**  
Worldship version is upgraded to 2017 please update this Option to 2017 to accommodate changes to the integration.

2016 and older  
2016 and older  
2017 and newer

After you've made the change, you can integrate as usual, following the steps in [Creating the UPS Export File](#).